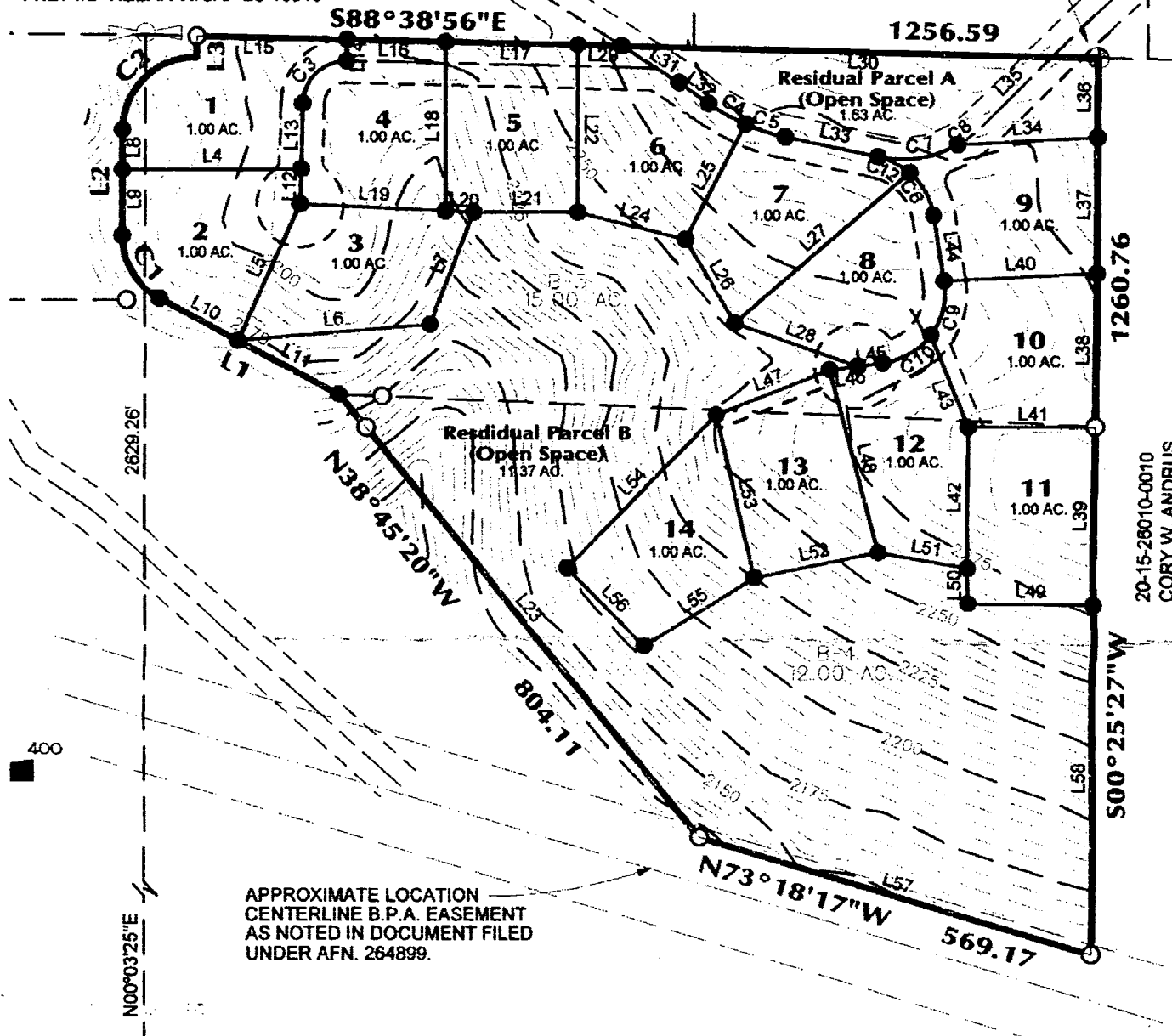


**N1/4 COR. SEC. 26**  
FND. 1/2" REBAR W/CAP LS 16915

MUHLBEIER, JAMES A ETUX.



20-15-28010-0010  
CORY W. ANDRUS

**C1/4 COR. SEC. 26**  
1/2" REBAR  
WITH CAP LS 7172, PER  
DEC SURVEY #2

